

### SUBMITTAL DATA SHEET

**CH-48LCDTUI**

Job Name: .....  
 Location: .....  
 Engineer: .....  
 Submitted to: .....  
 Submitted by: .....  
 Reference: .....

Date: .....  
 Approval: .....  
 Construction: .....  
 Unit #: .....  
 Drawing #: .....

### PERFORMANCE AND EFFICIENCY



Cooling		Heating	
48,000 Btu/h		49,500 Btu/h	
SEER	17.4	HSPF4/ HSPF5	10.3/8.8
EER	9.2	COP	3.52

### OPERATION TEMPERATURE RANGE

Cooling	Heating
62~90°F	32~86°F

### ELECTRICAL

Power supply	208-230V/ 60Hz, 1Ph
MCA	35
MFA	50
Fan motor	
Input	560 W
RLA	4.1 A

**MCA:** Minimum Circuit Ampacity    **MFA:** Max. fuse A    **RLA:** Rated Load

### PIPING

Refrigerant piping Liquid side/Gas side	3/8 - 5/8 in
---	--------------

This warranty should be registered on our web-site [www.cooperandhunter.us](http://www.cooperandhunter.us) within 60 days of installation. The warranty is only valid when installed by a Licensed HVAC Technician. A warranty period of Seven (7) years on compressor to the original registered end-user. A warranty period of Five (5) years on all parts to the original registered end user. Warranty applies only to products remaining in their original installation location.



### FUTURES

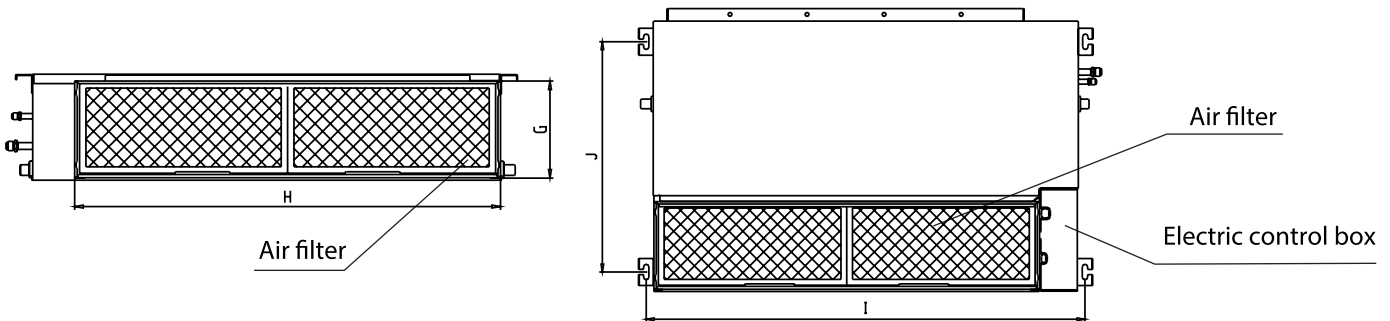
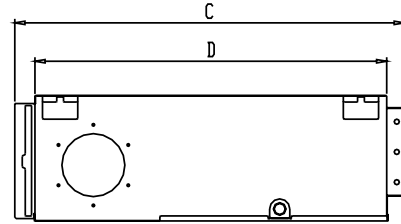
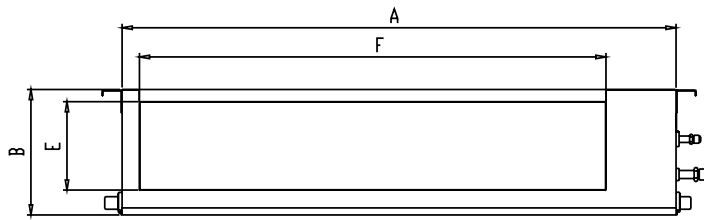
- Flexible Installation
- Fresh Air Function
- Wired Control
- Multi-Channel Air Distribution
- Built-In Water Pump
- Golden fin for outdoor and indoor
- Lower Noise
- Higher Pipe Limits
- Slim Design

### UNIT SPECIFICATION

Air Flow (Hi/Mi/Lo)	1229/1032/715
Noise Level (Hi/Mi/Lo)	50.5/47/43 dB(A)
Unit Dimension(W*D*H)	47.24x34.41x11.81 in
Net/Gross Weight	119.71/141.76 lb

SUBMITTAL DATA SHEET

CH-48LCDTUI



Outline dimension				air outlet opening size		air return opening size		Size of mounted lug	
A	B	C	D	E	F	G	H	I	J
47.24	11.81	34.41	31.5	8.9	41.1	11	43.3	48.8	27.4