



# MULTI ZONE Multi-Room Inverter Heat Pump Solution **HYPER and REGULAR Series**

**UP TO 22 SEER**

**UP TO 22.5 SEER**

LIMITED WARRANTY  
**7 YEARS**  
 COMPRESSOR

**5 YEARS**  
 PARTS



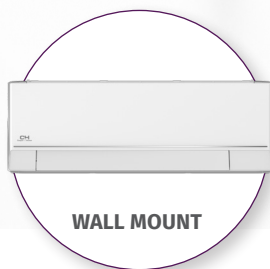
The newest generation of outdoor units now provides a wide range of compatibility across Cooper&Hunter's vast product selection to better serve any project configurations.

High-Frequency Racer Technology enables the compressor to reach maximum speed within 6 seconds on start up

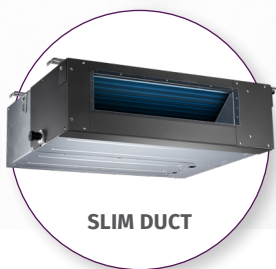
Intelligent Dusting Switch reverses the fan to clean dust, sand, and other debris from the coil

High-Efficiency pipes include 54 teeth to increase heat exchange

**UP TO 5 ZONES**



WALL MOUNT



SLIM DUCT



CEILING CASSETTE



FLOOR CONSOLE



AIR HANDLER UNIT





**REGULAR**

**HYPER**

Series		ES-Series	ES-Series	ES-Series	ES-Series	ES-Series	HPR-Series	HPR-Series	HPR-Series	HPR-Series	HPR-Series	
Outdoor model		CH-18MES-230V0	CH-28MES-230V0	CH-36MES-230V0	CH-48MES-230V0	CH-55MES-230V0	CH-HPR19M-230V0	CH-HPR28M-230V0	CH-HPR36M-230V0	CH-HPR48M-230V0	CH-HPR55M-230V0	
Power supply	Rated	V, Ph, Hz	208/230, 1, 60	208/230, 1, 60	208/230, 1, 60	208/230, 1, 60	208/230, 1, 60	208/230, 1, 60	208/230, 1, 60	208/230, 1, 60	208/230, 1, 60	
	Voltage range	V	187-253	187-253	187-253	187-253	187-253	187-253	187-253	187-253	187-253	
Cooling	Rated Capacity (range)	Btu/h	18,000(5,650-22,000)	28,000(9,838-30,438)	36,000(8,209-40,555)	48,000(19,000-50,000)	55,000(11,600-56,900)	19,000(5,500-25,000)	28,000(7,995-32,826)	36,000(17,900-42,000)	48,000(19,300-51,000)	55,000(11,600-56,900)
	Rated current	A	6.2	11	13.6	16.8	23.5	9.1	12.4	11.8	18	23.5
	EER	Btu/h	13.3	12.5	11.5	12.5	10.5	12.5	12.5	13.6	11.6	10.5
	SEER	Btu/h	22.5	23.8	23	22.4	19	22	22.5	21.8	21.5	19
Heating at 47°F	Rated Capacity (range)	Btu/h	19,000(5,050-24,400)	28,000(8,218-31,000)	37,000(8,008-44,632)	48,000(12,500-52,000)	55,000(33,000-63,000)	20,000(8,100-29,700)	28,000(5,035-38,712)	36,500(12,500-49,000)	49,000(11,500-58,000)	55,000(33,000-63,000)
	Rated current	A	6.3	10.5	13	17.1	22.5	9.4	10.5	12.2	17.8	22.5
	COP	W/W	3.92	3.73	3.61	3.6	3.22	3.4	3.66	3.85	3.59	3.22
	HSPF4		10.6	10.5	11.3	11	11.5	10.2	11.3	11	11	10.8
	HSPF5		8.5	8.8	9.2	8.8	9.5	8.7	9	9	9	9.1
Heating at 5°F (-15°C)	Rated capacity	Btu/h	12,400	15,500	23,959	27,000	32,200	19,000	24,000	36,000	48,000	44,500
	COP	W/W	1.75	1.75	1.75	1.65	1.78	1.96	1.75	1.9	2	1.8
Minimum Circuit Ampacity (outdoor unit)		A	18	24.5	25	40	40	20	25	40	42	40
Max. Fuse (outdoor unit)		A	25	30	40	60	60	25	40	60	50	60
Outdoor air flow (max)		CFM	1,765	2,1295	2,1475	4,500	4,500	2,1295	2,1475	4,500	4,500	4,500
Outdoor noise level (Sound pressure)		dB(A)	58	61	63	64	62	61	63	63	65	62
Dimension (WxDxH)		inch	35.04x13.46x26.50	37.24x16.14x31.89	37.24x16.14x31.89	37.48x16.34x52.48	37.48x16.34x52.48	37.24x16.14x31.89	37.24x16.14x31.89	37.48x16.34x52.48	37.48x16.34x52.48	37.48x16.34x52.48
Packing (WxDxH)		inch	39.17x15.67x29.13	42.91x19.69x34.84	42.91x19.69x34.84	43.11x19.49x58.27	43.11x19.49x58.27	42.91x19.69x34.84	42.91x19.69x34.84	43.11x19.49x58.27	43.11x19.49x58.27	43.11x19.49x58.27
Net/Gross weight			100/108	139/150	169/181	225/256	224/257	138/149	168/179	223/254	238/270	233/266
Refrigerant Type/Charged		oz	R410A/65.26	R410A/91.7	R410A/134.04	R410A/162	R410A/162	R410A/91.7	R410A/134.04	R410A/162	R410A/162	R410A/162
Refrigerant precharge		ft	49	74	98	123	123	49	74	98	123	123
Additional charge for each		oz/ft	0.16	0.16	0.16 - *0.32	0.16 - *0.32	0.16 - *0.32	0.16	0.16	0.16 - *0.32	0.16 - *0.32	0.16 - *0.32
Design pressure		PSIG	550/340	550/340	550/340	550/340	550/340	550/340	550/340	550/340	550/340	550/340
Refrigerant piping	Liquid side	inch	2 x 1/4"	3 x 1/4"	4 x 1/4"	5 x 1/4"	5 x 1/4"	2 x 1/4"	3 x 1/4"	4 x 1/4"	5 x 1/4"	5 x 1/4"
	Gas side	inch	2 x 3/8"	3 x 3/8"	3 x 3/8" + 1 x 1/2"	3 x 3/8" + 2 x 1/2"	3 x 3/8" + 2 x 1/2"	2 x 3/8"	3 x 3/8"	3 x 3/8" + 1 x 1/2"	3 x 3/8" + 2 x 1/2"	3 x 3/8" + 2 x 1/2"
Max. Pipe length		ft	131	197	262	262	262	131	197	262	262	262.46
Max. length for one indoor unit		ft	82	98	115	115	114	82	98	115	115	114.83
Max. height difference in level		ft	49	49	49	49	49	49	49	49	49	49.21
Max. height difference between indoor units		ft	33	33	33	33	33	33	33	33	33	33
Ambient temperature	Cooling	°F	-13-122	-13-122	-13-122	-13-122	-13-122	-22-122	-22-122	-22-122	-22-122	-13-122
	Heating	°F	-13-86	-13-86	-13-86	-13-86	-13-75	-22-86	-22-86	-22-86	-22-86	-13-75
Certification	AHRI		✓	✓	✓	✓		✓	✓	✓	✓	
	E*Star		✓	✓		✓		✓	✓	✓		
	NEEP		✓	✓	✓			✓	✓	✓	✓	
	UL		✓	✓	✓	✓		✓	✓	✓	✓	

0.16 for 1/4 in liquid pipe / \*0.32 for 3/8 in liquid pipe

\*specifications subject to change depending on the combinations

**REGULAR MULTI-ZONE INVERTER**  
Heat Pump Outdoor Unit

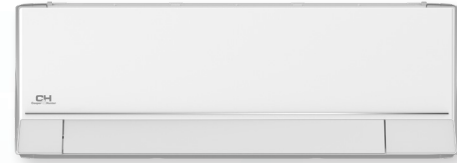
C&H Multi Zone systems, with inverter technology, are some of today's most advanced ductless split heat pumps. Up to 5 indoor units can be connected to a single outdoor unit, reducing the number of outdoor units required. All indoor units can be individually controlled and do not need to be installed at the same time.



**HYPER MULTI-ZONE**  
Heat Pump Outdoor Unit

With modern heat pump technology, the Hyper Heat series offers dependable cooling as well as the capability to heat in ambient temperatures as low as -22°F, making it an excellent, energy-efficient solution for colder climates.





WIFI Included

# ASTORIA



### CONTROL OPTIONS

- Wall thermostat (*Not included*)
- (Astoria) WIFI included (Olivia) WIFI not included
- Downloadable C&H app
- Remote control included (both Astoria and Olivia)

INDOOR	Indoor model			CH-06MASTWM-230VI	CH-09MASTWM-230VI	CH-12MASTWM-230VI	CH-18MASTWM-230VI	CH-24MASTWM-230VI	CH-30MASTWM-230VI	CH-36MASTWM-230VI
	Rated	V, Ph, Hz		208/230, 1, 60	208/230, 1, 60	208/230, 1, 60	208/230, 1, 60	208/230, 1, 60	208/230, 1, 60	208/230, 1, 60
Power supply	Rated Capacity (range)	Btu/h		6,000	9,000	12,000	18,000	24,000	30,000	36,000
Minimum Circuit Ampacity (MCA)	A			3	3	3	3	3	3	3
Max. Fuse	A			15	15	15	15	15	15	15
Indoor air flow (Hi/Mi/Lo)	CFM			317/217/167	335/229/176	335/229/176	523/376/305	611/414/318	646/505/382	639/505/382
Indoor noise level (Hi/Mi/Lo)	dB(A)			36/32/23	33/23/23	38/33/22	46/42/24	46/39/44	46/40/33	47/42/35
Indoor	Dimension (W*D*H)	inch		31.30x8.86x11.61	31.30x8.86x11.61	31.30x8.86x11.61	37.99x9.41x12.56	44.88x10.83x14.57	44.88x10.83x14.57	44.88x10.83x14.57
	Packing (W*D*H)	inch		34.25x14.57x12.01	34.25x14.57x12.01	34.25x14.57x12.01	41.14x15.75x12.80	48.43x17.91x13.98	48.43x17.91x13.98	48.43x17.91x13.98
	Net/Gross weight	lbs.		23/29	23/29	23/29	27/36	43/55	43/55	43/55
Room Temperature	Cooling	F		60 - 90	60 - 90	60 - 90	60 - 90	60 - 90	60 - 90	60 - 90
	Heating	F		32 - 86	32 - 86	32 - 86	32 - 86	32 - 86	32 - 86	32 - 86
Liquid Side/Gas side	Inch			1/4" / 3/8"	1/4" / 3/8"	1/4" / 1/2"	1/4" / 1/2"	3/8" / 5/8"	3/8" / 5/8"	3/8" / 5/8"

### 6K-36K Btu/h

- E-Box and PCB located in the front of the unit with a cover kickstand providing easy access
- Revolutionary design offers convenient disassembly & maintenance with an easy-to-remove fan blower
- Auto-Swing for vertical and horizontal louvers
- New User-Friendly Remote Controller design
- Follow Me Mode



SCAN HERE

MULTIZONE INDOOR UNIT COMBINATIONS CHART



SCAN HERE

HYPER MULTIZONE INDOOR UNIT COMBINATIONS CHART



WIFI Ready

# OLIVIA



INDOOR	Indoor model			CH-06MOLVWM-230VI	CH-09MOLVWM-230VI	CH-12MOLVWM-230VI	CH-18MOLVWM-230VI	CH-24MOLVWM-230VI	CH-30LVWM-230VI	CH-36LVWM-230VI	CH-30ELVWM-230VI	CH-36ELVWM-230VI
	Rated	V, Ph, Hz		208/230, 1, 60	208/230, 1, 60	208/230, 1, 60	208/230, 1, 60	208/230, 1, 60	208/230, 1, 60	208/230, 1, 60	208/230, 1, 60	208/230, 1, 60
Power supply	Rated Capacity (range)	Btu/h		6,000	9,000	12,000	18,000	24,000	30,000	36,000	30,000	36,000
Minimum Circuit Ampacity (MCA)	A			3	3	3	3	3	3	3	3	3
Max. Fuse	A			15	15	15	15	15	15	15	15	15
Indoor air flow (Hi/Mi/Lo)	CFM			247/176/141	291/194/153	291/194/153	530/459/382	601/459/382	701/536/380	653/447/329	794/617/470	732/517/400
Indoor noise level (Hi/Mi/Lo)	dB(A)			38/33/20	40/34/23	42/36/25	45/41/24	48/40/28	49/43/39	54/45/40	51/47/44	56/54/40
Indoor	Dimension (W*D*H)	inch		28.70x7.87x11.50	31.57x7.87x11.61	31.57x7.87x11.61	42.64x9.61x13.23	42.60x9.21x13.27	49.57x11.14x14.25	49.57x11.14x14.25	49.57x11.10x14.25	49.57x11.10x14.25
	Packing (W*D*H)	inch		31.10x10.63x14.76	34.45x11.22x14.96	34.45x11.22x14.96	45.47x16.34x12.40	45.47x16.34x12.40	52.76x17.72x15.16	52.76x17.72x15.16	52.76x17.72x15.16	52.76x17.72x15.16
	Net/Gross weight	lbs.		17/22	19/24	19/24	29/37	30/38	43/55	43/55	37/50	40/52
Room temperature	Cooling	F		60 - 90	60 - 90	60 - 90	60 - 90	60 - 90	60 - 90	60 - 90	63 - 90	63 - 90
	Heating	F		32 - 86	32 - 86	32 - 86	32 - 86	32 - 86	32 - 86	32 - 86	32 - 86	32 - 86
Liquid side/Gas side	inch			1/4" / 3/8"	1/4" / 3/8"	1/4" / 1/2"	1/4" / 1/2"	3/8" / 5/8"	3/8" / 5/8"	3/8" / 5/8"	3/8" / 5/8"	3/8" / 5/8"

### 6K-36K Btu/h

- Auto-Swing for horizontal louvers
- New User-Friendly Remote Controller design
- WiFi Ready (not included)
- Turbo Mode
- Follow Me Mode

CH-30ELVWM-230V  
CH-36ELVWM-230V



CH-30ELSPHWM-230VI  
CH-36ELSPHWM-230VI



*\*Different indoor panel options for 30K-36K units*



## MINI FLOOR CONSOLE

Model		CH-12MSPHMC-230VI
Power Supply	V-Hz-Ph	208-230V / 60Hz, 1Ph
Cooling Capacity	Btu/h	12,000
Minimum Circuit Ampacity (MCA)	A	1.3
MAX.FUSE	A	15
Air Flow (Hi/Mi/Lo) (No duct)	CFM	365/318/248
Noise Level (Hi/Mi/Lo)	dB(A)	45/41/35
Unit Dimension(WxDxH)	in	27.6x8.3x23.6
Package Dimension(WxDxH)	in	31.9x28x12
Net/Gross Weight	lb	32.4/42.8
Indoor Temperature (cooling/ heating)	F°	62-90/32-86
Liquid side / Gas side	in	1/4" - 1/2"

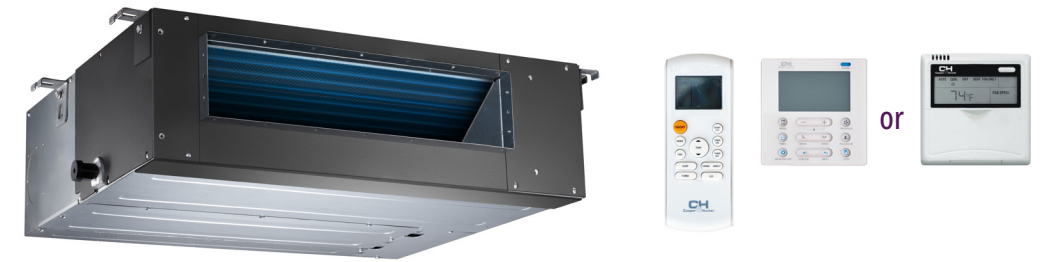


\*WIFI Port Kit optional



## SLIM DUCTS AND CASSETTES

### SLIM DUCT



Model		CH-M09DTUI	CH-M12DTUI	CH-M18DTUI	CH-M24DTUI
Power Supply	V-Hz-Ph	208-230V / 60Hz/1Ph	208-230V / 60Hz/1Ph	208-230V / 60Hz/1Ph	208-230V / 60Hz/1Ph
Cooling Capacity	Btu/h	9,000	12,000	18,000	24,000
Minimum Circuit Ampacity (MCA)	A	1.1	1.1	1.2	1.5
MAX. FUSE	A	15	15	15	15
Air Flow (Hi/Mi/Lo)	CFM	353/283/177	353/283/177	530/450/371	776/694/435
Noise Level (Hi/Mi/Lo)	dB(A)	38/35/32	38/36/33.5	39/37/35	44/41/38
Unit Dimension (WxDxH)	in	27.6x19.9x7.9	27.6x19.9x7.9	34.7x26.5x8.3	43.3x30.5x9.8
Packing Dimension (WxDxH)	in	33.9x21.3x11.2	33.9x21.3x11.2	42.1x28.5x10.6	51.4x31.7x12
Net/Gross Weight	lb	37.5/48.3	37.5/48.3	52.5/65	86.9/103
Design pressure	PSIG	550/340	550/340	550/340	550/340
Room Temperature	F°	62-90/32-86	62-90/32-86	62-90/32-86	62-90/32-86
Liquid side/ Gas side	in	1/4" - 3/8"	1/4" - 1/2"	1/4" - 1/2"	3/8" - 5/8"

## UNIVERSAL FLOOR & CEILING

Model		CH-18MSPHFC-230VI	CH-24MSPHFC-230VI
Power Supply	V-Hz-Ph	208-230V / 60Hz, 1Ph	208-230V / 60Hz, 1Ph
Cooling Capacity	Btu/h	18,000	24,000
Minimum Circuit Ampacity (MCA)	A	1.9	2.5
MAX.FUSE	A	15	15
Air Flow (Hi/Mi/Lo) (No duct)	CFM	666/595/525	880/770/650
Noise Level (Hi/Mi/Lo)	dB(A)	47/44/39	58.5/55/52
Unit Dimension(WxDxH)	in	42.1x26.6x9.3	42.1x26.6x9.3
Package Dimension(WxDxH)	in	45.1x29.7x12.3	45.1x29.7x12.3
Net/Gross Weight	lb	55.1/65.5	58.4/69.2
Indoor Temperature (cooling/ heating)	F°	62-90/32-86	62-90/32-86
Liquid side / Gas side	in	1/4" - 1/2"	3/8" - 5/8"



\*WIFI Port Kit optional



### CEILING CASSETTE



\*WIFI Port Kit optional

Model		CH-09MSPHCT-230VI	CH-12MSPHCT-230VI	CH-18MSPHCT-230VI	CH-N24MSPHCT-230VI
Power Supply	V-Hz-Ph	208-230V / 60Hz, 1Ph	208-230V / 60Hz, 1Ph	208-230V / 60Hz, 1Ph	208-230V / 60Hz, 1Ph
Cooling Capacity	Btu/h	9,000 (2,970-10,500)	12,000 (2,800-14,100)	16,000 (5,600-16,000)	24,000 (8,130-26,272)
Minimum Circuit Ampacity (MCA)	A	3	3	1.9	2.5
MAX.FUSE	A	15	15	15	15
Air Flow (Hi/Mi/Lo)	CFM	352.94/305.88/270.59	379/309/261	562.35/485.29/438.82	705.88/635.29/547.06
Noise Level (Hi/Mi/Lo)	dB(A)	37.5/34.5/31.5	40.5/35.5/31.5	43.5/38.5/35.5	49/46/43
Unit Dimension(WxDxH)	in	22.44x22.44x10.24	22.44x22.44x10.24	22.44x22.44x10.24	32.68x32.68x8.07
Panel Dimension(WxDxH)	in	25.5x25.5x2	25.5x25.5x2	25.5x25.5x2	37.4x37.4x2.2
Packing Dimension(WxDxH)	in	28.15x28.15x4.84	28.15x28.15x4.84	28.15x28.15x4.84	40.75x40.75x3.54
Net/Gross Weight	lb	31.97/38.14	35.27/41.01	35.71/46.96	47.18/55.34
Indoor Temperature (cooling/ heating)	F°	60-90/32-86	60-90/32-86	60-90/32-86	60-90/32-86
Liquid side/ Gas side	in	1/4" - 3/8"	1/4" - 1/2"	1/4" - 1/2"	3/8" - 5/8"

## AHU 18K-24K Btu/h

**INTELLIGENT AIR FLOW:** Allows the technician to automatically and accurately calculate the required static pressure.

**ANTI-COLD AIR FUNCTION:** Fan doesn't blow until the coil is warm, so cold air is not pushed into the room upon startup.

**FAST COOL/HEAT FUNCTION:** When set temperature is more than 10 degrees difference from room temperature, the unit will run at 100% capacity to reach it faster.

**ALUMINUM COIL:** Fewer corrosion points than copper coils.

**AUXILIARY HEATER:** Can be purchased separately as a back up heat option for indoor units. Available in 5kW, 10kW, 15kW, and 20 kW models.

**AUTO RESTART FUNCTION:** Auto restart in the event of a power outage.

**REFRIGERANT LEAK DETECT:** Protects the compressor from damage by high temperature due to refrigerant leak, by alerting user with error code "EC".

**WIRED CONTROLLER:** Compatible with most 24V thermostats

**WIFI READY:** C&H WIFI Kit enables control with C&H remote App via IOS or Android smart device (optional)

**TRUE MULTI POSITION AIR HANDLER:** Horizontal, vertical, or downward installation.

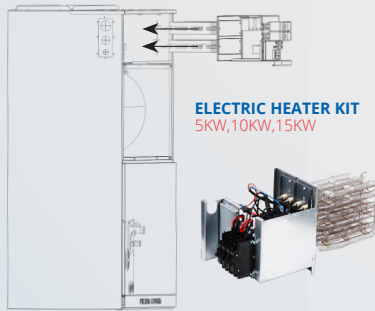
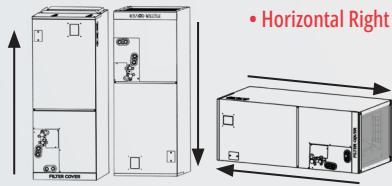


Btu/h			18K	24K
Indoor Model			CH-M18AHU	CH-M24AHU
Power supply	Rated	V, Ph, Hz	208/230V, 60Hz 1Ph	208/230V, 60Hz 1Ph
	Voltage range	V	187-253	187-253
Cooling	Rated Capacity (Range)	Btu/h	18,000 (7,000~19,600)	24,000 (11,800~28,000)
Minimum Circuit Ampacity (Indoor unit)		A	3	4
MAX. FUSE (Indoor unit)		A	15	15
Indoor air flow (Hi/Mi/Lo)		CFM	576/529/488	759/694/629
Indoor noise level (Hi/Mi/Lo)		dB(A)	38/35/34	42/40/38
External Static Pressure (ESP)	Rated	In. wg.	0.1	0.1
	Range	In. wg.	0-0.8	0-0.8
Indoor Unit	Dimension (WxDxH)	inch	21.02x17.52x45	21.02x17.52x45
	Packing (WxDxH)	inch	26.57x20.87x48.62	26.57x20.87x48.62
	Net/Gross weight	lbs.	107/127	107/127
Refrigerant piping	Liquid side/ Gas side	inch	1/4" / 1/2"	3/8" / 5/8"
Drainage water pipe diameter		inch	3/4"	3/4"
Connection wiring			14AWG*2 Stranded, shielded	14AWG*2 Stranded, shielded
Room Temperature	Cooling	°F	60-90	60-90
	Heating	°F	32-86	32-86

SCAN HERE  
HYPER MULTIZONE AHU  
COMBINATIONS CHART



- INSTALLATION OPTIONS:**
- Vertical Upflow
  - Vertical Downflow
  - Horizontal Left
  - Horizontal Right



## ACCESSORIES

### CONTROL OPTIONS



- 24V wall thermostat included
- Remote control included
- WIFI Smart + Port Kit (not included)
- Downloadable C&H app

### FILTERS

Recommended Size of Filter	Width	Depth	Trim	
	inch:	inch:	inch:	
18K-24K	CH-M18AHU	16	20	1
	CH-M24AHU	16	20	1

## ELECTRIC HEATERS

- Excellent solution for supplementary heating or higher energy efficiency in extremely cold weather
- High quality nichrome material
- Easy installation and maintenance (one piece)
- Various heater capacity options: 5kW, 10kW, 15kW

### GROUPED HEATER CONTROL

FOR MORE PRECISE TEMPERATURE				Electric Heater	1.5 ton (18,000 BTU/h)	2 ton (24,000 BTU/h)
AHU Capacity	5kW heater	10kW heater	Power		CH-M18AHU	CH-M24AHU
	One group	One group	Model	Y	Y	
	10KW+5KW	10KW+5KW	5KW	Y	Y	
	W1 on 5KW	W1 on 10KW	10KW	Y	Y	
			15KW	-	Y	

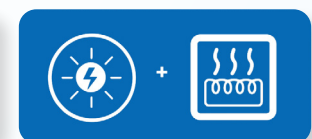
### THREE KINDS OF HEATING MODES AVAILABLE FOR DIFFERENT APPLICATIONS



Heat Pump



Heater



Heater + Heat Pump